

# **BURTON UPON STATHER PARISH COUNCIL NEWSLETTER**

Editor: Cllr Diana May

clerk.buspc@hotmail.co.uk

January 2020

## **Chairman and Vice Chair Report January 2020**

Happy New Year and welcome to the first Newsletter of the year. It feels a little bizarre to be writing this report in early December! We hope everyone had a lovely Christmas and enjoyed the festive season and events held at the Church, the Village Hall, the School and the Burton Heritage Group's Christmas Lights Switch-on at the Paddock.

The Parish Office renovations are now complete. The Parish Clerk will be based in the Parish Office starting in the New Year and available to residents on a Tuesday morning 10:30-12pm. The Clerk or Councillors can be contacted for access to the archives at other times. We will also be opening the Office to exhibit some of the archive materials as soon as possible. In addition, we are hoping to hold annual exhibitions in the Village Hall of archive materials.

A full programme of commemoration and celebration events has now been set in place for VE Day 75, which can be found on page 3. If anyone has any photos or materials relating to the war period or VE Day Celebrations, we would be very grateful to be able to borrow and display them. It would be brilliant if as many houses and businesses as possible display bunting in the colours of red, white and blue.

You will find in this Newsletter a questionnaire about some issues we have identified as being problematic from a previous consultation exercise undertaken in 2006. We hope to receive as many questionnaires as possible. Completed questionnaires should be returned to the Parish Office by 29<sup>th</sup> February 2020 please. We realise it is very important to gather the views of our younger residents and so questionnaires will also be passed to Burton Primary School. Should you require further copies of the questionnaire please email the Parish Clerk, Candace Brent, at [clerk.buspc@hotmail.co.uk](mailto:clerk.buspc@hotmail.co.uk).

We would like to take this opportunity to thank our fellow Councillors for all their hard work and support over the past year. There are a number of vacancies on the Parish Council so if you are interested in joining us, or wish to find out more, please contact the Parish Clerk, Candace Brent, at [clerk.buspc@hotmail.co.uk](mailto:clerk.buspc@hotmail.co.uk). We would also like to remind you that members of the public are always welcome to attend Parish Council Meetings which are held on the second Monday of the month at 7:15pm in the Wedgwood Room in the Village Hall.

Alan Craddock and Cathy Harber

Chair and Vice Chair.

# **BURTON UPON STATHER PARISH COUNCIL NEWSLETTER**

Editor: Cllr Diana May

clerk.buspc@hotmail.co.uk

January 2020

## **Village Hall News**

Well, Christmas has come and gone but we still have fond memories of the Christmas Fayre. The children's posters really brightened up the Hall and we are very much hoping this will become a Village Hall Christmas tradition. Finlay, Alexia and Lola did a wonderful job of opening the Fayre and the School Choirs provided plenty of festive entertainment. The stalls and the kitchen were very busy throughout the day and we already have booking for a table for the next Christmas Fayre.

December saw the much anticipated Freespirit Dance School Christmas Show. This year the children performed their version of 'Matilda'. Everyone who attended was very impressed with the show, with one audience member commenting that it was the highlight of the year to watch the children in action. We look forward to seeing what they will come up with next!

The Village Hall continues to be very busy and very well used by the community every day, with activities available throughout the week for all ages. Projects for the coming year will include redecoration of the Wedgwood Room and Entrance Hall.

Once again, we would like to thank the Committee for all their hard work in keeping the Village Hall running over the year. In particular we would like to say a big thank you to one of our longest-serving Committee members, Annie Mumby, who is standing down after years of dedicated service to the Village Hall. She will be very much missed by all.



# **BURTON UPON STATHER PARISH COUNCIL NEWSLETTER**

Editor: Cllr Diana May

clerk.buspc@hotmail.co.uk

January 2020

## **VE DAY PROGRAMME EVENTS**

### **FRIDAY 8<sup>TH</sup> MAY – SUNDAY 10<sup>TH</sup> MAY 2020**

The Parish Council, working in conjunction with village groups, is proposing the following celebrations and commemorations on the 75<sup>th</sup> anniversary of VE Day. Obviously, this is a significant milestone in our history and commemorative celebration events are being co-ordinated nationally by SSAFA. We have established a programme incorporating the national events with our own local events. Further details will be available in the next Newsletter in April.

#### **Friday 8<sup>th</sup> May**

- 3pm Piper to play 'Battle's Over' held at the Paddock.
- 6:55pm 'Cry for Peace around the world' Town Crier in the Churchyard.
- 7pm Church Bells ringing.

The above events are nationally co-ordinated.

7:30pm VE Dance at the Village Hall. Live band, Village Vocalizers and Glyn Morgan's Disco will come together to bring an evening of entertainment combining a 40s theme and music from the decades in between to modern day. There will be a cash bar, bring your own picnic and tickets will be limited to 100 and will cost £10 each. All are welcome.

#### **Saturday 9<sup>th</sup> May**

Morning (time to be confirmed) Burton Primary School is arranging a fancy-dress parade around the village followed by a picnic and 1940s games in the school grounds.

- 4:30pm Tea Party organised by the Heritage Group at the Ferry House Inn.
- Evening Possible lighting of the beacon – to be confirmed.

#### **Sunday 10<sup>th</sup> May**

- 10:30am Ecumenical church service at St Andrew's Church. Bugler playing 'Last Post'.

## **SCHOOL REPORT**

On behalf of everyone at Burton upon Stather Primary School, we hope you all had a magical Christmas and we wish you all a very Happy New Year. We hope 2020 will be about bigger goals, more happiness, stronger relationships new memories and opportunities and being more focused than ever. After returning from the Christmas break, we've all returned to school feeling more energised than ever, and can't wait to pick up the work we began last half term.

There is so much to report from last term, but here are a few of our highlights...

Back in December our Reception children returned to school for their (very chilly) night walk. They looked, listened and

# **BURTON UPON STATHER PARISH COUNCIL NEWSLETTER**

Editor: Cllr Diana May

clerk.buspc@hotmail.co.uk

January 2020

compared night to day, finishing with a delicious hot chocolate to warm up. We welcomed our Year 5 parents and carers to their Egyptian open afternoon. Everyone had an enjoyable afternoon making pyramid structures from marshmallows and spaghetti, writing names on papyrus paper and making clay Canopic Jars. We also opened our doors to our Year 4 parents and

School Report continued...

carers to celebrate their Viking topic learning, which involved modelling clay into Viking pottery, researching and writing Viking Runes, sewing and sampling a traditional Viking banquet. Our school hall transformed into a cinema for our Christmas movie night (The Polar Express) and we also had a brilliant community Bingo evening- thank you to everyone who attended and helped to raise a staggering £576.46! We have used some of the money raised to buy some sensory resources so support some of our pupils with a Special Education Need and we hope to spend the remaining money on a class set of ukuleles.

In the run up to Christmas our wonderful school choir and signing choir performed at Lindsey Lodge, the 'Light up a tree' service in the Methodist Church, the Village Christmas Fair and the Carols Around the Tree Service - there isn't anything quite like children singing (and signing the actions) to get us feeling festive is there? All our KS1 pupils performed in our 2020 Christmas Production and our Year 6 class also led the Christmas Service at Church. They performed some wonderful poetry and read some thoughtfully written prayers. All our pupils worked very hard and loved the chance to perform to an audience. All the help with costumes and lines was greatly appreciated, as was the hard work of our fantastic staff- a lot goes on behind the scenes to create a spectacular production!

Thank you to Burton Heritage Group and Hemswell Contracting Ltd for very kindly donating sheds for our Early Years setting, this has meant we can safely store our new resources and we have converted one of the sheds in to a role-play area for the children. Our school garden now has a welcome bed, classes are now planting in their raised beds and we have dug up a new section of the school garden to allow us to plant and grow potatoes that can be used in our school kitchen and when cooking in our Forest School. We also applied for some seedlings from the Royal Horticultural Society so that every child has the opportunity to plant their own tree. I remember walking down to Normanby when at school to plant my own - something I won't ever forget. We hope it will help children understand how important trees are for wildlife whilst helping to fight climate change too.

Our 'It's cool to be kind day' theme last term was 'Be the 'i' in Kind'. Each child pledged to be kind to and look out for others. We highlighted the good deeds so many of our children do and focused on the positive power and common thread of kindness that brings us together.

Last half term we collected toys, treats and food for Jerry Green's Dog Rescue Centre in our blue charity bin (kept at the front of school). When children donated an item, they signed their name on a raffle ticket and three children were chosen to come with me to deliver the items to the rescue centre just before Christmas. What a difference everyone made and thank you to those who contributed.

We hosted the first ever Ladies evening back in November, to help support small, local businesses and provide an opportunity for our parents and wider community to start their Christmas shopping. Even though the weather was bleak, it was a fantastic turnout and a lovely, relaxed evening. Special thanks to those members of our community who were instrumental in the organisation of the evening and it all running so smoothly. Thank you to all who attended and provided us with such positive feedback - we hope to see you again later in the year.

Mrs Emily Eyre

Headteacher



# **BURTON UPON STATHER PARISH COUNCIL NEWSLETTER**

Editor: Cllr Diana May

clerk.buspc@hotmail.co.uk

January 2020

## **Making Burton Accessible – Update**

Since the last newsletter the sub-committee have evaluated all the pavements in Burton. As part of this evaluation we have established gradients and accessibility for wheelchairs and mobility scooters. Councillor Diana May has collated all the information and is working hard on producing a map of Burton to highlight ease of access for us all. If you have a business in the village and would like it to feature on the map please let us know.

Vice Chair, Cllr Cathy Harber

### **NEWSLETTER DATES & HOW TO GET IN TOUCH**

<b><u>All adverts and articles must be agreed and with Diana in a usable format (An editable word document sent electronically) by:</u></b>	<b><u>Distribution by end of:</u></b>
23 <sup>rd</sup> June 2019	July 2019
29 <sup>th</sup> September 2019	October 2019
Friday 13 <sup>th</sup> December 2019	January 2020
Friday 13 <sup>th</sup> March 2020	April 2020
Friday 12 <sup>th</sup> June 2020	July 2020

The Parish Newsletter is delivered to all households in the Parish and beyond. It is the only media that has such a scope. Its role is to promote not only the workings of the Parish Council but to help local groups and businesses by promoting them when ever possible. Would you like to see something in the newsletter? Maybe propose somebody for interview? Do you have something to say? Advertisements? Promotions? please contact the editor Cllr Diana May by email at: [dianamayx@aol.com](mailto:dianamayx@aol.com). Payments should be made to the Parish Council Clerk: PLE email: clerk.buspc@hotmail.co.uk

**Cast members of Freespirit Dance School's recent performance of Matilda in the Village Hall.**

# BURTON UPON STATHER PARISH COUNCIL NEWSLETTER

Editor: Cllr Diana May

clerk.buspc@hotmail.co.uk

January 2020



## Totally Burton...

Diana May Interview with  
Alan Craddock our Parish Council Chairman.

**He is one of the busiest people I know, happy and busy taking care of the Parish Council.**

**Read on to hear more...**



• **Starting at the beginning, where were you born?** Alan Nigel Craddock was born and brought up in Walsall in the West Midlands. My father was a funeral director – I was involved in the collection of the occasional body! Despite having three sons, none of us followed him into that profession.



• **What were your school days like?**

My education was at a Bluecoat School which is a church school which had a Grammar stream. I excelled at sports; loved football and athletics. I proudly represented the town in the Half Mile Race. I enjoyed my school days and became Deputy Head Boy and a House Captain. It was a mixed school – I met Christine there – we started going out when we were just 16!

Alan the Romantic: the first contact was made at an annual Speech Day. The story goes that after

*Alan and Christine celebrated their Golden Wedding in*

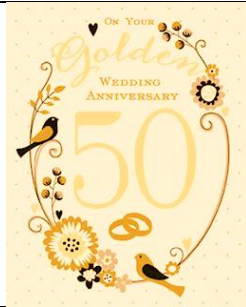
# BURTON UPON STATHER PARISH COUNCIL NEWSLETTER

Editor: Cllr Diana May

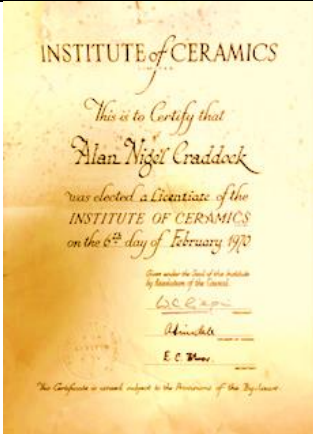
clerk.buspc@hotmail.co.uk

January 2020

the speech I presented Christine with a rose, a rose that she kept for a very long time.



*April 2019 -  
50 Years!!! WOW!!*



• **What was your first job?** - I left school with some GCE 'O' levels and was lucky enough to have two or three job offers, a couple of them were in engineering. One was with a local brick maker based in the next town called Aldridge. I was offered a job as a management trainee. Within about 18 months the factory was taken over by a much larger company call Ibstock. The new company put me in to apply for a scholarship with the College of Ceramics – I won that scholarship...it was £300 for 9 months. It was good to get especially as I was still employed. It was fascinating, I enjoyed it and it set me on my career. I am still a member (Honorary) of the institution, now called the Institute of Mining, Minerals and Materials.

• **Career?** When I was at college Christine and I got engaged and married in 1969. At that time the factory I was working at was getting to grips with new technologies. The company moved me about and then eventually they offered me work in this neck of the woods. There were two brick works: at Belton and Crowle. Belton became the family base for 40 years as I worked wherever I was needed. In the last ten years of my career I was taking care of the environment that is left after the reclaiming of clay. These 'holes' left behind became landfill sites. I had a big responsibility taking care five sites – a very worthwhile activity for the company that took me all over the country clocking up many thousands of miles! So many miles that the car garage made a special presentation to me when I handed back the company car when I retired!

• **You mention your family?** - We were keen to have children and so Andrew was born in 1970, Emma in 1972 and then Neal 18 months later. All three children were educated at the wonderful, well respected Belton School and then moved on to the school at South Axholme. Andrew went on to achieve BA Hons and Masters and is in Senior Management in manufacturing. Emma achieved her ambition of working in a bank. Emma connected us to Burton when she came here to raise her family. Neal, a strong manager, has worked his way up in food manufacturing to become a Senior Manager. Christine and I fell in love with Burton.





• **What hobbies or activities have you be involved in?** - Rugby – Neal, at age 7, was keen on rugby and within no time I was invited to get involved with the Scunthorpe junior team. For about 8 years I was the secretary of the Mini Juniors. I loved it and have very fond memories. It was great to be involved with the twin town events with Clamart (suburbs of Paris shown in red on this map of France). I gave up the Rugby when I became a governor at South Axholme School. I spent three years as the Chair of the Governors and

# BURTON UPON STATHER PARISH COUNCIL NEWSLETTER

Editor: Cllr Diana May

clerk.buspc@hotmail.co.uk

January 2020

	<p>absolutely loved my time there. I have had hobbies such as badminton and bowles but I do struggle to find time. We are keen caravaners and go all over.</p>	
<p><b>• Tell me, what is your favourite book?</b></p> <p>I have read the Complete works of Sherlock Holmes 7 or 8 times!!</p>	<p>I am fascinated by Churchill and so happily read anything on the man.</p>	
<p><b>• What about music, what is your favourite album?</b></p> <p>The 'Highland Cathedral' is a special piece for me, it was on this compilation tape. I also like Wet, Wet, Wet's 'Love is all Around', Rod Stewart, Eva Cassidy and Les Misérables.</p>		
<p><b>• Can you tell all our readers something surprising about yourself?!!</b></p> <p>I was in London near Kings Cross on the day of the terrorist bombings on 7<sup>th</sup> July 2005. I arrived into pandemonium and called my boss to see if he knew what was going on. He did not have any details and thought there had maybe been some electrical explosion. He told me which bus I should get to meet up with him, obviously I followed his advice. While standing in the bus queue (with my huge briefcase) I see a sign saying that you had to get a ticket <i>before</i> getting on the bus. I was frustrated at this as I was going to lose more time. I thought maybe I can walk – I sort of knew which way to go. I came out of the queue and set off walking. I reckon I had been walking for 7 or 8 minutes when (out of sight) there was a huge BOOM! not far behind me – it turned out it was the bus that I had been queuing for! My boss called, relieved that I answered - as he confirmed the bus number and location of the explosion. All very emotional and frightening. The mobile network crashed and I could not find a public phone – time was calling me and getting no answer! Eventually I found a payphone and waited in <i>that</i> queue – I had to let Christine know I was ok. Once she was updated, I made a plan to get home but no chance of that. I stayed with my son and came home the next day. Christine had caught sight of me on one of the news reports, spotting my big briefcase!</p>		
<p><b>• Alan, please give us a joke...</b></p> <p>'How do you get five donkeys in a Fire Engine?'</p> <p style="text-align: center;"><i>Two in the front, two in the back and one on the top going 'Ee-or, ee-or, ee-or!'</i></p>		
<p><b>• Alan, please give us a favourite recipe...</b></p> <p style="text-align: center;"><u>Sea Bass Elforno</u></p>	<p>Quickly pan fry Sea Bass and then place on top of red and green peppers, new potatoes and Cherry tomatoes in a casserole and pop it in the oven. I like to do casseroles.</p>	



# **BURTON UPON STATHER PARISH COUNCIL NEWSLETTER**

Editor: Cllr Diana May

clerk.buspc@hotmail.co.uk

January 2020

- **Tell me, what you think of our community here in Burton?**

There are days that are full of parish work, there is a lot to do. We desperately want to encourage more parish councillors – any adults, at any age are welcome. The public can come along and sit in on the meetings – I did 12 months of sitting in and it was very useful.

- **Last thoughts**

Please contact me, come and talk to me. I am passionate about the village; indeed this is where Christine and I will be for the rest of our lives.

- **Last word...from Diana.** I have learned a lot about you and your history, it's has been interesting. You are putting a great deal into the Parish Council Chairmanship, I think you set a good example for getting active and not sitting back, admirable.

# BURTON UPON STATHER PARISH COUNCIL NEWSLETTER

Editor: Cllr Diana May

clerk.buspc@hotmail.co.uk

January 2020

## St. Andrews and Burton Methodist Church forthcoming events



<p>5<sup>th</sup> January 10.30 a.m. Communion for Epiphany                      12<sup>th</sup> January 9.30 a.m. Morning Prayer                      15<sup>th</sup> January 10.30 a.m. Wednesday Communion and Coffee                      19<sup>th</sup> January 9.30 a.m. Parish Communion                      26<sup>th</sup> January 10.30 a.m. Family Service</p>	<p>January                      5<sup>th</sup> Peter Jackson                      12<sup>th</sup> Barbara Braidell                      19<sup>th</sup> Mervyn White                      26<sup>th</sup> Muriel Jacklin</p>
<p>2<sup>nd</sup> February 10.30 a.m. Communion for Candlemas                      9<sup>th</sup> February 10.30 a.m. Covenant Service at Methodist Chapel                      16<sup>th</sup> February 9.30 a.m. Parish Communion                      19<sup>th</sup> February 10.30 a.m. Wednesday Communion and Coffee                      23<sup>rd</sup> February 9.30 a.m. Lay Led                      26<sup>th</sup> February 10.30 a.m. Ash Wednesday Communion and Coffee</p>	<p>February                      2<sup>nd</sup> At Alkborough 4 pm Rev Helen Croft                      9<sup>th</sup> Ecumenical Service Rev H Croft &amp; Rev A Pledger                      16<sup>th</sup> Local Arrangement                      23<sup>rd</sup> Laurie Holtby</p>
<p>Café Church – Café Church is very informal – we move the pews to the side and sit round small tables with coffee, croissants and biscuits (which can be consumed, replenished etc at any point during the “service”). There is usually an activity linked to the theme and discussions on each table – something for all ages. Some hymns/songs, prayers and readings (which are not always from the Bible) and maybe a film clip, link it all together. All are welcome.</p>	
<p>Post Office facilities at St. Andrews Just a reminder that the Post Office in the village is an out-reach facility that operates inside the brown door vestry at St. Andrews Church. It can deal with your mail, your parcels, cash withdrawals and many more things. About the only thing we don't do are passports and car tax. Our opening hours are:-                      Mon 9.30 a.m. – 12.30 p.m. Wed 10.00 a.m. – 1.00 p.m. Thurs 9.30 a.m. – 11.30 a.m.</p>	

# BURTON UPON STATHER PARISH COUNCIL NEWSLETTER

Editor: Cllr Diana May

clerk.buspc@hotmail.co.uk

January 2020



## BURTON UPON STATHER

### VILLAGE HALL

**Booking Clerk Jan Benn 07870804787.**

### ACTIVITIES

	Morning	Afternoon	Evening
<b>MONDAY</b> 	<b>CHAT AND CRAFT</b> Contact 01724 720835		<b>PRIVATE CLUB</b>  Council Meeting Every second Monday in month
<b>TUESDAY</b> 	<b>PAINTING FOR PLEASURE</b> Every two weeks Contact 01724 487809		<b>W.I.</b> Second Tuesday in month Contact 07854 742189
<b>WEDNESDAY</b> 	<b>PILATES</b> Contact 01652 408577	<b>CHOIR</b> Contact 01724 720548	<b>YOGA</b> Contact 01724 720860
<b>THURSDAY</b> 	<b>Keep Fit</b> Contact 07934 012410	<b>FRIENDSHIP CLUB</b> First Thursday in month Contact 01724 720865	<b>SHORT MAT BOWLS</b> September -April Contact 01724 721033
<b>FRIDAY</b> 	<b>TODDLERS</b> Contact 07305 317536		<b>FREESPIRIT DANCE</b> Contact 077085 00449
<b>SATURDAY</b> 	<b>PILATES</b> Contact 01652 408577		
<b>SUNDAY</b> 		<b>SHORT MAT BOWLS</b> September-April Contact 01724 721033	

**CHAIRWOMAN ANN CROFT 01724 720835**

## **Have you ever thought about becoming a Parish Councillor?**

The parish of Burton upon Stather covers the villages of Burton upon Stather, Normanby and Thealby with an electorate of 2,223 people. Its Parish Council consists of a maximum of fifteen members, but unfortunately due to the lack of residents standing at the election in May 2018, there are currently only nine members representing the community.

Council meets on the second Monday of each month, which are public meetings open to all residents of the parish. It is non-political and councillors give their time voluntarily.

The Council:

- Discusses and resolves issues raised by parishioners and represents their interests to North Lincolnshire Council, Government and other bodies.
- Raises an amount of money, the Parish Precept, through local taxation and makes decisions about its use specifically on parish amenities and groups.
- Plans, and prepares for the developing needs of the Parish.
- Is a statutory consultee of the local Planning Authority, North Lincolnshire Council, for all planning applications made within the Parish.

If you are over 18 years of age and have lived or worked in the Parish for at least 12 months, then you could be eligible to become a Councillor. If this interests you, then why don't you attend a Council meeting to see what goes on or get in touch with the Clerk to find out more.

It is **YOUR** Council for **YOUR** Community and without your support the Council will not be able to help to improve **YOUR** neighbourhood.

For further information contact the Clerk on 07982265914 or clerk.buspc@hotmail.co.uk.

# BURTON UPON STATHER PARISH COUNCIL NEWSLETTER

Editor: Cllr Diana May

clerk.buspc@hotmail.co.uk

January 2020

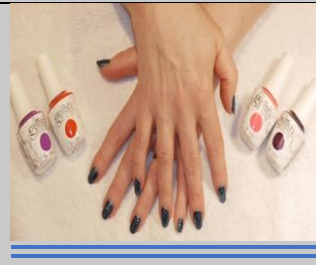
Adverts cost only £25 per quarter page and reaches all households in the parish.

## Skin Deep

47 Holme Dr, Burton upon Stather.

Tel: 01724 720131

Skin therapy centre & beauty treatments.



Please call for more information and brochure.

Treatments offered:

Facials, Waxing, Eyelash & Brow Tinting,  
Manicure & Pedicures, Gel Polish and Indian  
Head Massage.

## FOREMOST FEET

S.A.C Dip. Foot  
Health Practitioner



For the professional treatment of:

- Corns
- Athletes Foot
- Ingrowing Toenails
- Verruca
- Cracked and hard skinned feet
- Fungal & thickened Toenails
- Callus
- Pedicures & Massages

Call & book your home appointment with

the **Foremost Feet Team**

**07895 736 332**

foremostfeet@gmail.com

Foremost footcare

in your home



Adverts cost only £25 per quarter page and reaches all households in the parish.



## Booth House Farm Shop

Northlands Road, Winterton, DN159UP

Open Monday to Saturday 8.30am to 5 pm  
Sunday's 9.00am to 2pm

Selling a wide selection of  
home-grown vegetables.  
We also stock fruits &  
salads, local Honey, eggs,  
potatoes etc.

Tel: 07799483445

# BURTON UPON STATHER PARISH COUNCIL NEWSLETTER

Editor: Cllr Diana May

clerk.buspc@hotmail.co.uk

January 2020

## Flixborough Village Hall

£30 per session for non-parish residents

A quaint Village Hall with a full kitchen, toilets (including disabled toilets) and space for 100 persons, ample off-street parking is available nearby.



If you would like to make an enquiry please contact the booking secretary using the details below:

Mrs G Shanahan M: 07933301733

[flixboroughbookings@gmail.com](mailto:flixboroughbookings@gmail.com)



Sharon Wale  
reflexology

mind. body. sole.

a gentle therapy of pressure  
massage to the feet

help the body to restore  
its balance naturally

Sharon Wale  
swatereflexology@gmail.com  
01724 335 355  
07954 180 207

Word Search Answers.

Orchard  
Tee  
Dorset  
Linton  
Cliff  
Todds  
Glebe  
Holme  
Stather  
Ashwood  
Wiltshire  
Huntington

# BURTON UPON STATHER PARISH COUNCIL NEWSLETTER

Editor: Cllr Diana May

clerk.buspc@hotmail.co.uk

January 2020

*Just for fun...  
Try to find the 12 Burton  
street names!*

O	R	C	H	A	R	D	G	C	H
S	D	O	R	S	E	T	E	E	O
F	Y	B	P	T	H	A	A	H	L
K	P	L	G	A	P	S	C	N	M
C	W	I	L	T	S	H	I	R	E
L	F	N	E	H	N	W	Q	S	F
I	S	T	B	E	P	O	M	E	H
F	C	O	E	R	T	O	D	D	S
F	I	N	A	F	K	D	L	L	P
H	U	N	T	I	N	G	T	O	N

# BURTON UPON STATHER PARISH COUNCIL NEWSLETTER

Editor: Cllr Diana May

clerk.buspc@hotmail.co.uk

January 2020



## BURTON UPON STATHER PARISH COUNCIL

The Parish Office, High Street, Burton upon Stather, DN15 9DE

Parish Clerk: Mrs Candace Brent  
email: [clerk.buspc@hotmail.co.uk](mailto:clerk.buspc@hotmail.co.uk)  
mobile: 07982 265914

The Parish Council is in the process of updating the Parish Plan and would like to receive the views of residents on certain issues. Please could you take a few minutes to answer the following questions and once completed, rip or cut off the page and return it to the Parish Office at the above address. If you would like a copy of the previous Parish Plan, then please contact the Clerk.

For the replies below: 10 is very concerned, 0 is not at all concerned.

### 1. Speeding in the Village

How concerned are you about the speed that vehicles travel through the villages?

0.....1.....2.....3.....4.....5.....6.....7.....8.....9.....10

Please comment

### 2. Dog mess

How concerned are you about dog mess left by dog owners?

0.....1.....2.....3.....4.....5.....6.....7.....8.....9.....10

Please comment

### 3. Public transport to the Village

How concerned are you about the public transport provided to the villages?

0.....1.....2.....3.....4.....5.....6.....7.....8.....9.....10

Please comment

### 4. Transport to Winterton Surgery for appointments

How concerned are you about being requested to attend appointments at Winterton Surgery?

0.....1.....2.....3.....4.....5.....6.....7.....8.....9.....10

Please comment

### 5. Accessibility around the Villages



# **BURTON UPON STATHER PARISH COUNCIL NEWSLETTER**

Editor: Cllr Diana May

clerk.buspc@hotmail.co.uk

January 2020

How difficult to you find it to walk around the villages?

0.....1.....2.....3.....4.....5.....6.....7.....8.....9.....10

Please comment

**6. Parish Office**

How would you like to see the Parish Office used for the community? Please comment

Please comment

**7. Neighbourhood Watch**

Are you interested in expanding the Neighbourhood Watch Areas? YES/NO

If YES, are you willing to be involved? YES/NO

If so, which area do you live and how would you like to be involved. (Please leave your contact details at the end of the survey). Please comment

**8. Entertainment**

Which kind of entertainment would you like to see provided in the village? Eg touring companies, cinema. Please comment

Would you be willing to help organize an event? YES/NO

If YES, please leave your contact details below.

Name.....

Address.....

.....

Telephone..... Email.....

I agree to the Parish Council holding my contact details so that I can be contacted with regards to this survey (please tick)

**PLEASE RETURN THIS SURVEY TO THE PARISH OFFICE BY**

**29<sup>TH</sup> FEBRUARY 2020**